

Example 19.

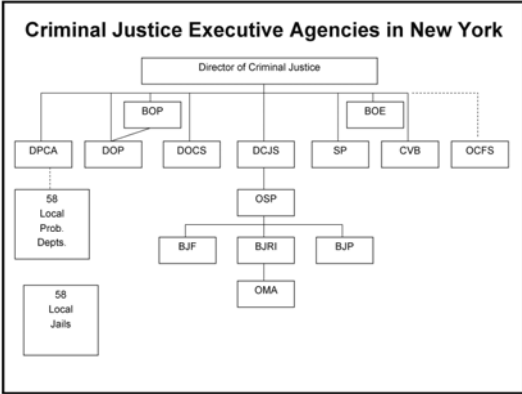
New York Presents an Information Strategy

New York Presents an Information Strategy

Transition from Prison to Community Initiative

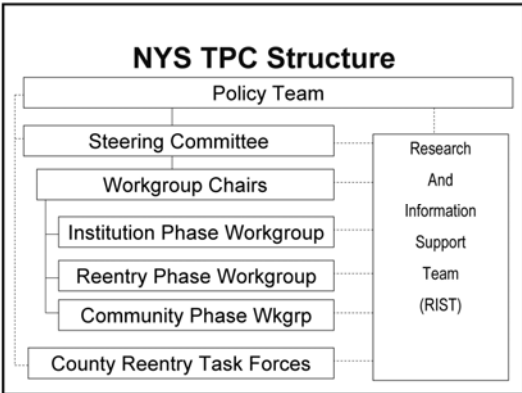
Research and Information Support Team (RIST)

...a safer New York resulting from the successful transition of offenders from prison to living law-abiding lives in their communities.



(Abbreviations)

DPCA – Division of Probation and Correctional Alternatives	DCJS – Division of Criminal Justice Services
DOCS – Department of Correctional Services	OSP – Office of Strategic Planning
BOP – Board of Parole	BJF – Bureau of Justice Funding
DOP – Division of Parole	BJP – Bureau of Justice Partnerships
SP – State Police	BJRI – Bureau of Justice Research and Innovation
BOE – Board of Examiners (for sex offenders)	OMA – Offender Mgt Analysis
CVB – Crime Victims Board	
OCFS – Office of Children and Family Services	



14 Agencies on Steering Committee
(Those in bold italics are represented on the RIST)

Division of Criminal Justice Services
Department of Correctional Services
Board of Parole
Division of Parole
Department of Health
Department of Labor
Division of Housing and Community Renewal
Office of Alcoholism and Substance Abuse Services
Office of Children and Family Services
Office of Mental Health
Office of Temporary and Disability Assistance
Office of Mental Retardation and Developmental Disabilities
Division of Probation and Correctional Alternatives
Division of the Budget

- RIST Functions (Purpose)**
- Answer questions from SC and its workgroups
 - Proactively provide information the team judges to be relevant to issues being considered by the SC and its workgroups
 - Develop data infrastructure to facilitate efficient response to SC and workgroup information needs

RIST Functions (Scope)

- Help Steering Committee and workgroups refine questions
- Design and conduct original statistical analyses of existing data
- Develop interdisciplinary data sets
- Summarize findings from academic literature, government reports, and unpublished research previously conducted by participating agencies
- Contribute to identification of evidence-based programs, policies, and procedures
- Recommend original research and evaluation studies
- Design and oversee monitoring and evaluation of TPC initiatives

Early Efforts (Preparations)

- Reviewed relevant data maintained by participating agencies
- Reviewed participating agencies' data sharing policies and procedures
- Drafted "charter"
 - Purpose and Scope
 - RIST procedures

Instructive Example: Eligibility and Utilization for Medicaid, Food Stamps, and Temporary Assistance

- Core question: Are there long delays in establishing eligibility for Medicaid, food stamps, and temporary (cash) assistance for reentering offenders, which if so would delay delivery of services?
- To answer the question requires combining individual level data from three participating agencies:
 - DOCS data to identify cohort of individuals released in 2003
 - OTDA data to analyze food stamp and temporary assistance eligibility
 - DOH data to analyze Medicaid eligibility and service utilization
- Barriers
 - DCJS had staff who could be assigned the analyses immediately, but
 - DOH could not share Medicaid data for this particular purpose
 - OTDA had access to some of DOH data, but only for a specified purpose
- Solution:
 - DOCS defined cohort, passed identifiers to OTDA
 - ODTA matched to TA and FS data, forwarded combined file to DCJS for analysis, forwarded identifiers and matched "links" to DOH
 - DOH completed match and conducted Medicaid analysis, DCJS conducted TA and FS analyses
- (Oh, by the way, the answer appears to be "not attributable to eligibility processing system")

Lessons Learned

- Medicaid project took months; if the normal processes have to be repeated separately for each analysis, the work of the Steering Committee and its workgroups will be repeatedly and substantially delayed
- Analyses often can be completed quickly, once the relevant data have been compiled and prepared for analysis. The sources of greatest delay are
 - Preparing, reviewing, and approving requests for access to data
 - Matching records from two or more sources

An Overarching MOU

- Authorize the creation of a "TPC Core Data Base," incorporating individual-level data from DOCS, DOP, and DCJS for selected "cohorts"
- Establish a "certification process" whereby construction of additional data sets can be authorized for TPC purposes without executing separate MOUs for each instance
- Authorize "pre-matching" personal identifiers in the Core Data Base with internal data base identifiers in participating agencies' data systems.
- (See handout for additional details)

Examples of RIST Projects

- Review of criminogenic risk/need factors
- Population analyses
 - Preliminary analysis presented to SC (core data)
 - Expanded analysis under development (interdisciplinary)
 - County (aggregate) profiles under development
- Development of interim risk score (mostly static factors)
 - Demonstration of feasibility and validity for SC
 - Refinements under development for use by County RTFs?
- Literature reviews re: "best practices" for employment programs, SA and MH treatment, housing, and family reunification; perhaps cognitive-behavioral interventions
- Later:
 - Individual, interdisciplinary inmate profiles?
 - Practitioner surveys?
 - Performance indicators?